

## Power Unit – Adding Shock Lead Procedure

The following procedure highlights the steps required to add a Shock Lead Assembly (200134) to the Power Unit Assembly (200100).

The following tools are required to perform this task:

- 5mm Allen Key
- 7mm Socket and Socket Wrench

The power switch must be isolated and the key removed from the Power Unit before starting the procedure.



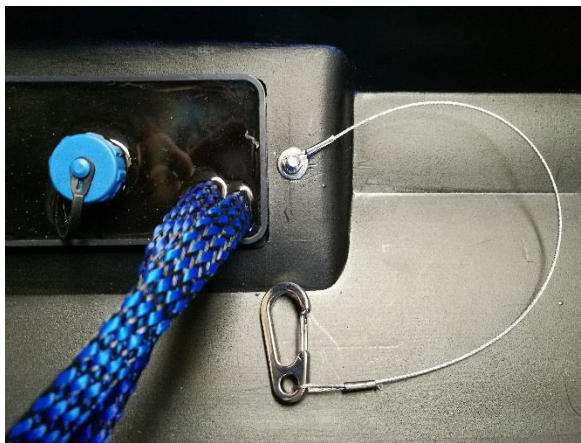
1. Leaving the Power Unit in position, remove the steel tie down strap. (Note: Leave Power Unit in position)



2. Lift cover slowly to expose the controller leads.



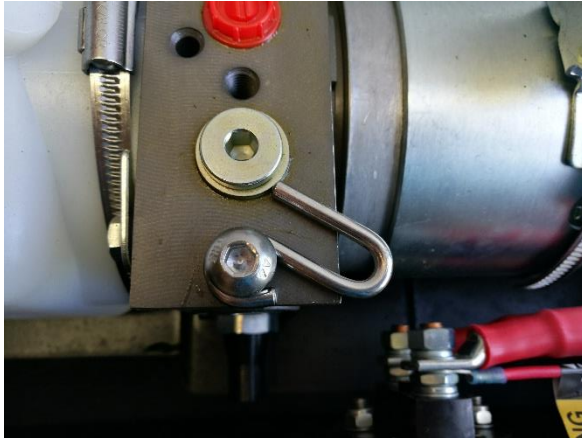
3. Disconnect the electrical connections.



4. Remove the 7mm nyloc nut and loop the shock lead over the exposed thread.



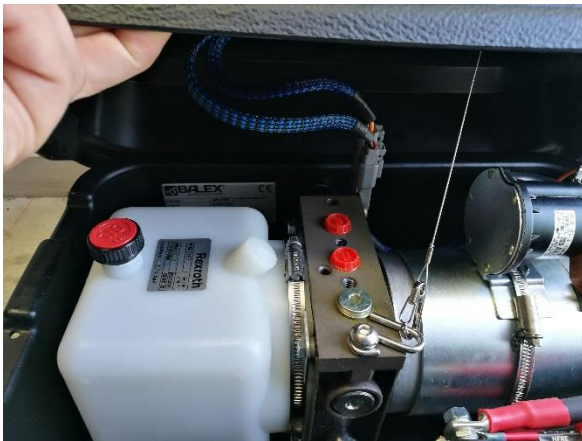
5. Put a washer over top of the shock lead and fasten



6. Attach the hook to the Power Unit.



7. Re-attach the electrical connections.



8. Attach the Shock Lead to the hook.



9. Slowly lower cover and reattach steel tie-down strap.